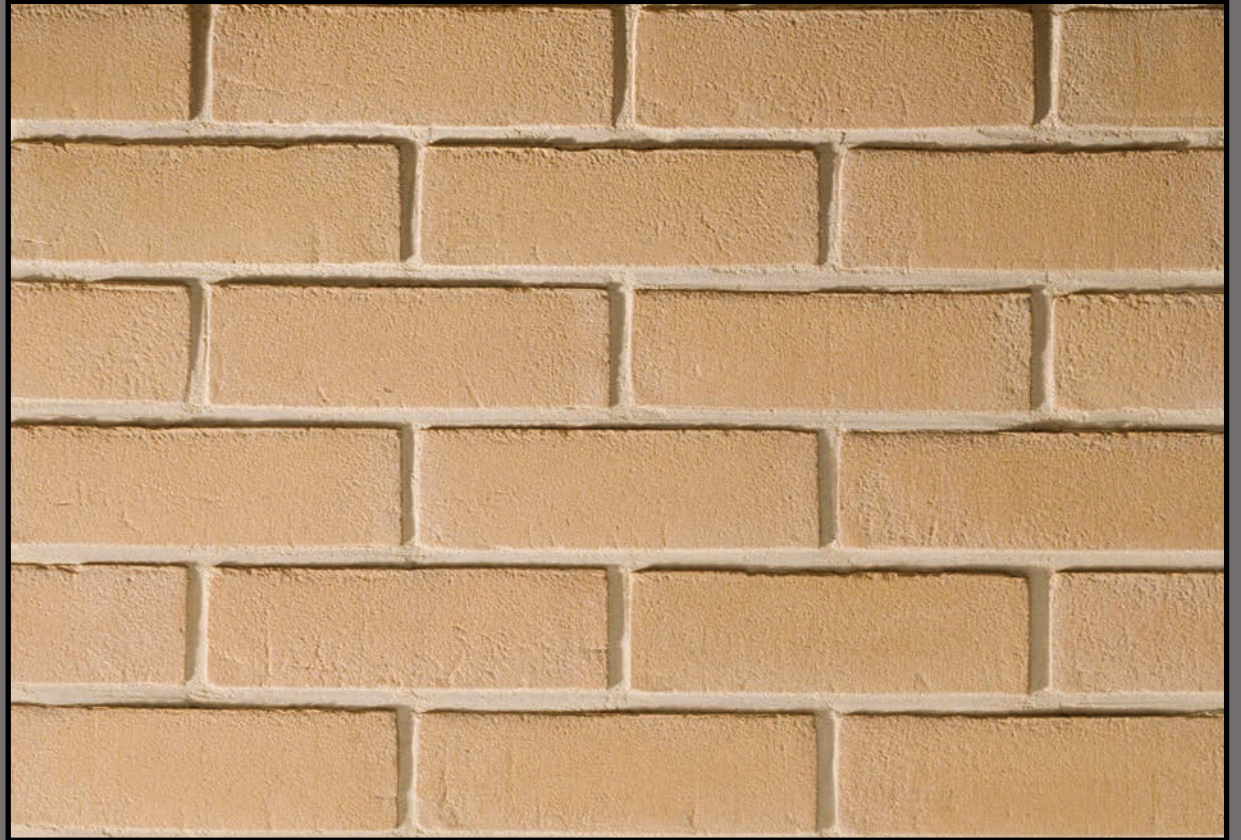



Cromwell Buff

Size	65mm
Water Absorption	20%
Compressive Strength	12.5 N/mm
Durability	F2
Bricks per pack	552
Pack Weight	1.17T
Salt Classification	S2
Dimensional Tolerance	T2
Dimensional Range	R1



 | traditionalbrick

 | tbsbrick

 | Traditional Brick & Stone

www.traditionalbrickandstone.co.uk

Traditional Brick & Stone Ltd
Park View House
Bow Street
Rugeley
Staffs
WS15 2DG

T 01889 574466 F 01889 227438
Sales@traditionalbrickandstone.co.uk