

# Aldwych Yellow Rustica

*ET* Clay Products Ltd

## Signature

Range

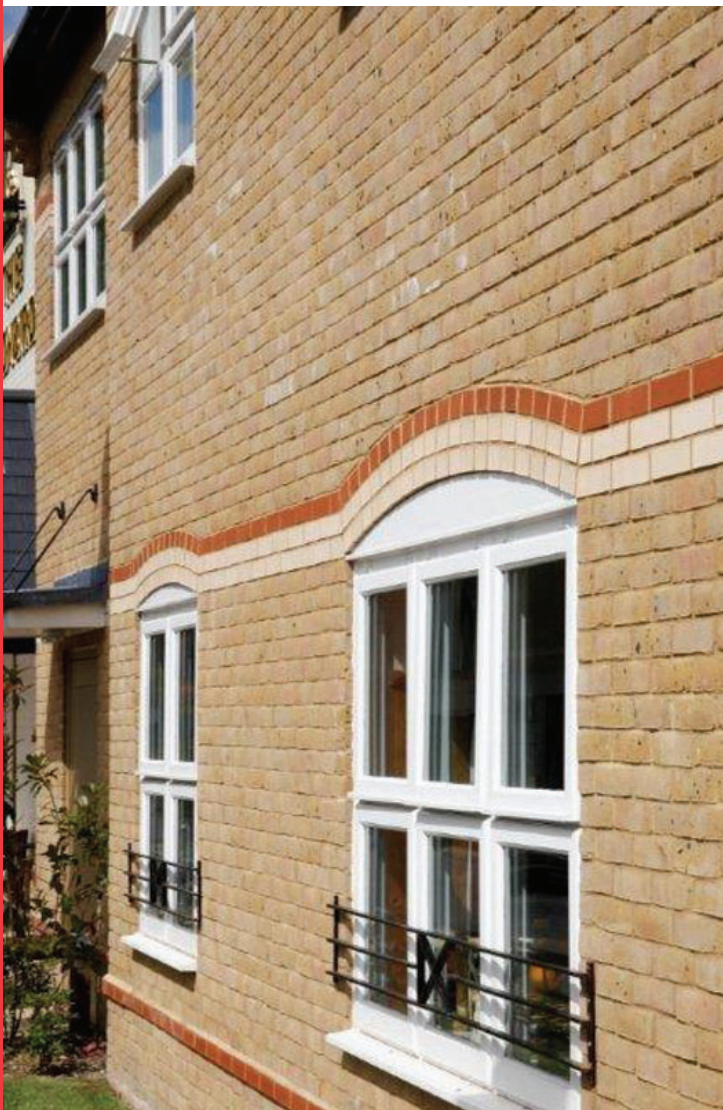
- Adds character and individual charm to self build projects
- Advanced manufacturing process
- Readily available
- Ideal for new build and refurbishment projects



Aldwych Yellow Rustica

## Technical Data:

- Conforms to BS EN 771-1:2011
- Standard brick size 215x102x65mm
- Durability rating: F2 frost resistant
- Active soluble salts: S2
- Compressive strength: >7.0 N/mm<sup>2</sup>
- Water absorption: <24%
- Pack Size = 400



  
**Wienerberger**  
Building Material Solutions

ET Clay Products Ltd

Head Office and Showroom: Hangmans Wood Industrial Park, Stifford Road, Aveley, Essex RM15 6RL

T: 020 8501 2100 F: 020 8500 9990 E: [enquiries@etbricks.co.uk](mailto:enquiries@etbricks.co.uk) W: [www.etbricks.co.uk](http://www.etbricks.co.uk)